

Shared innovation... how new ideas are born

Key points 2016

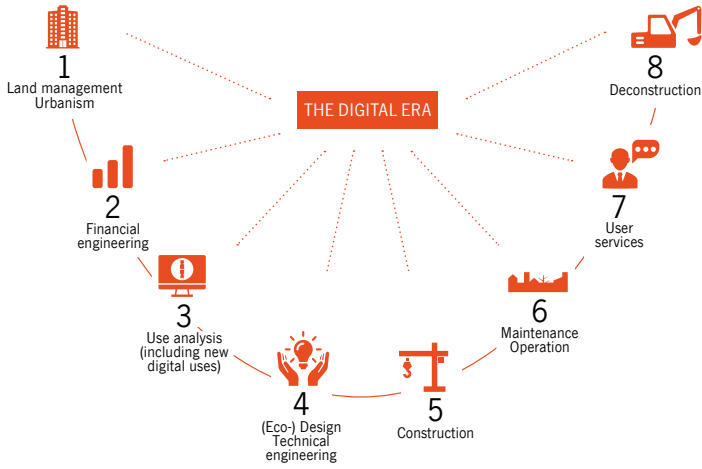
Shared innovation



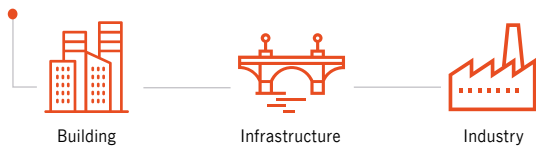
Our most valuable asset:
more than 50,000 men and women
who are committed to our customers

Bouygues Construction is constantly working to cultivate internal and external partnerships. This results in a totally shared way of innovating that inspires Bouygues Construction's men and women, customers, partners and stakeholders at every stage of the value chain of construction. BIM in use at the very heart of construction sites, Lean Management developed across the whole company, an open innovation policy and the multi-local proximity of the "country" locations close to customers all testify to the effectiveness of the drive for innovation of a responsible and committed group.

ACTIVE THROUGHOUT THE ENTIRE VALUE CHAIN OF CONSTRUCTION



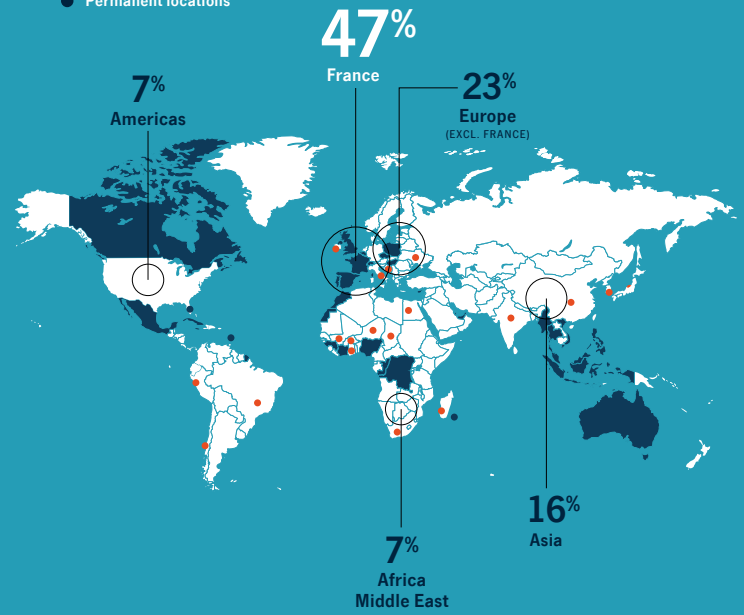
BUSINESS SECTORS



A MULTI-LOCAL GROUP

Bouygues Construction is a global player in construction, with operations in more than 80 countries. It designs, builds and operates projects in the sectors of building, infrastructure and industry. As a responsible and committed leader in sustainable construction, Bouygues Construction sees innovation as its primary source of added value, benefiting its customers, employees and partners.

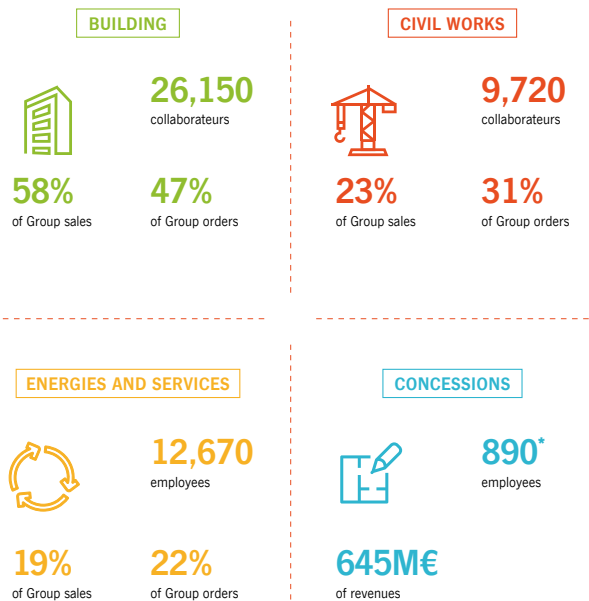
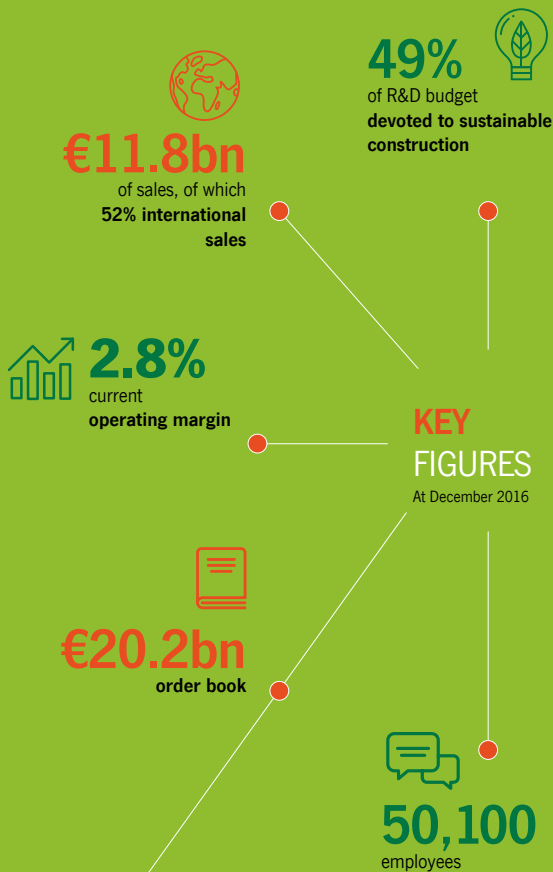
- Added value projects
- Permanent locations



2016 sales

OUR BUSINESSES

Increasing urbanisation and environmental issues are creating ever greater construction needs. A range of challenges – eco-design, BIM, sustainable cities, smart infrastructure and homes, energy efficiency – constantly redefine the know-how that we have to draw on. As a global player, Bouygues Construction seizes the opportunities provided by technological advances to constantly modernise its businesses. Its expertise over the entire value chain of the construction sector enables it to furnish its customers with increasingly competitive solutions for mounting and successfully concluding the most complex projects.



*of whom 23 are included in the consolidated workforce.